



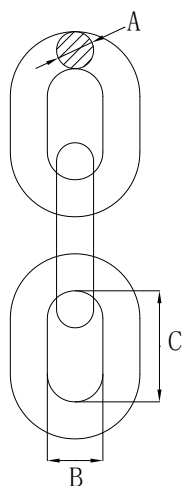
G100

RIGGING

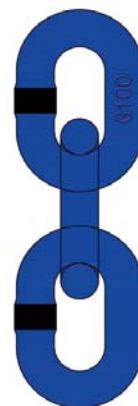
With Product Warning And Application Information

G100 RIGGING

G100

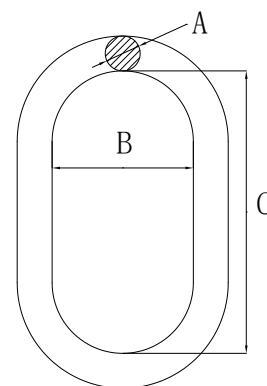


产品 编号	工作负荷 T	技术参数 MM			单重 KG
		A	B	C	
KLR-731-6	1.4	6	8.7	18	0.81
KLR-731-7	1.9	7	9.5	21	1.11
KLR-731-8	2.5	8	10.9	24	1.49
KLR-731-10	4	10	13.5	30	2.28
KLR-731-13	6.7	13	17.5	39	3.86
KLR-731-16	10	16	21.5	48	5.75
KLR-731-20	16	19	25.6	57	8.96
KLR-731-22	19	22	29.5	66	11.05
KLR-731-26	26.5	26	33.8	78	15.1
KLR-731-32	39.3	32	41.6	96	23.2



G100

产品 编号	工作负荷 T	技术参数 MM			单重 KG
		A	B	C	
KLR-701-2.3	2.3	13	60	110	0.34
KLR-701-3.5	3.5	16	60	110	0.53
KLR-701-5	5	18	75	135	0.86
KLR-701-7.6	7.6	23	90	160	1.6
KLR-701-10	10	27	100	180	2.46
KLR-701-14	14	33	110	200	4.14
KLR-701-25.1	25.1	36	140	260	6.22
KLR-701-30.8	30.8	45	180	340	12.85
KLR-701-40	40	50	190	350	16.22



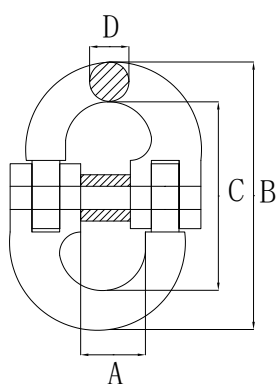
WARNING 警告

Never exceed Working Load Limit
绝对不能超过工作拉力使用

G100 RIGGING

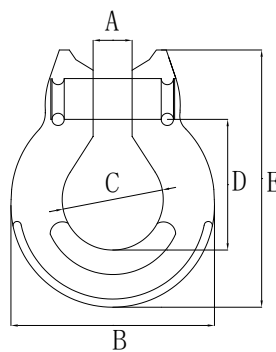


G100



产品编号	规格	工作负荷 T	技术参数 MM				单重 KG
			A	B	C	D	
KLR-702-6	6-10	1.4	14	60	44.5	7.6	0.1
KLR-702-8	8-10	2.5	18.5	84.5	61.5	10	0.22
KLR-702-10	10-10	4	23	97.2	72	12.6	0.45
KLR-702-13	13-10	6.7	27.5	127	89	16.8	1.15
KLR-702-16	16-10	10	33.5	145	103	21	1.75
KLR-702-20	20-10	16	42	175	116	24.5	2.7
KLR-702-22	22-10	19	48	193	135	27	4.02
KLR-702-26	26-10	26.5	61	228	164	32	5.1
KLR-702-32	32-10	39.3	80	274	194	40	8.5

Fatigue tested at 1.5 times Working Load Limit for 20000



G100

产品编号	规格	工作负荷 T	技术参数 MM					单重 KG
			A	B	C	D	E	
KLR-703-6	6-10	1.4	8.5	44	20	25	55	0.12
KLR-703-8	8-10	2.5	10.5	60	24	35	73.5	0.27
KLR-703-10	10-10	4	12.5	70	31	40.5	90	0.44
KLR-703-13	13-10	6.7	16	90	38.5	54	109	0.89
KLR-703-16	16-10	10	19	112	51	64	141.5	1.69

Never exceed Working Load Limit
绝对不能超过工作拉力使用

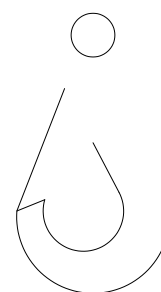
WARNING 警告

G100 RIGGING



G100 EYE SELFLOCK HOOK G100

产品 编号	规格	工作 负荷T	技术参数 MM					单重 KG
			A	B	C	D	E	
KLR-704-6	6-10	1.4	21	110	11	20	28	0.5
KLR-704-8	8-10	2.5	27	137	12	26	35.5	0.9
KLR-704-10	10-10	4	34.5	169	14.9	30	45	1.5
KLR-704-13	13-10	6.7	40	209	20	40.5	53.5	2.7
KLR-704-16	16-10	10	50	254	27	50.5	62	5.7
KLR-704-20	20-10	16	60	277	30	62	76.5	7.9
KLR-704-22	22-10	19	70	319.5	32	66	80	11.2



G100

产品 编号	规格	工作 负荷T	技术参数 MM				单重 KG
			A	B	C	E	
KLR-705-6	6-10	1.4	7.5	96	20	28	0.5
KLR-705-8	8-10	2.5	9.5	123	26	35.5	0.9
KLR-705-10	10-10	4	12	144	30	45	1.6
KLR-705-13	13-10	6.7	15	182	40.5	53.5	2.9
KLR-705-16	16-10	10	17.5	217	50.5	62	5.8
KLR-705-20	20-10	16	25	235	62	76.5	8.6
KLR-705-22	22-10	19	25.5	276.5	66	80	12.1

WARNING 警告

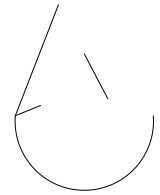
Never exceed Working Load Limit
绝对不能超过工作拉力使用

G100 RIGGING



G100

产品 编号	规格	工作 负荷T	技术参数 MM					单重 KG
			A	B	C	D	E	
KLR-706-6	6-10	1.4	32.5	11.5	23	172.5	28	0.6
KLR-706-8	8-10	2.5	36	13	28	216	35.5	1.1
KLR-706-10	10-10	4	42	15.5	35	253.5	45	2.0
KLR-706-13	13-10	6.7	50	17	40	313	53.5	4.0
KLR-706-16	16-10	10	61	21.5	56	391.5	62	6.8
KLR-706-20	20-10	16	72	26	62	437	76.5	12.5
KLR-706-22	22-10	19	97	33	94	539	80	17.1



G100

产品 编号	规格	工作 负荷T	技术参数 MM				单重 KG
			A	B	C	E	
KLR-715-6	6-10	1.4	8	32.5	79	8.5	0.26
KLR-715-8	8-10	2.5	9.5	35	95.5	9.8	0.41
KLR-715-10	10-10	4	13	43.5	135.5	13	0.92
KLR-715-13	13-10	6.7	16	59	162	16	1.65

Never exceed Working Load Limit
绝对不能超过工作拉力使用

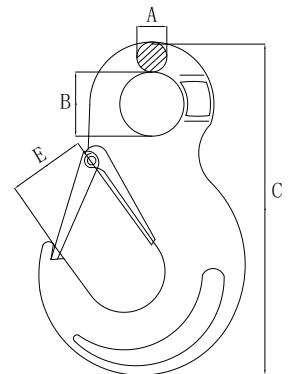
WARNING 警告

G100 RIGGING



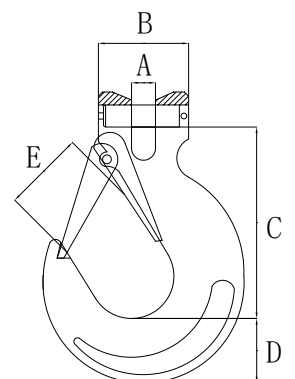
G100

产品 编号	规格	工作负荷 T	技术参数 MM				单重 KG
			A	B	C	E	
KLR-707-6	6-10	1.4	10	20.5	111	18.5	0.32
KLR-707-8	8-10	2.5	11	25	137.5	25	0.6
KLR-707-10	10-10	4	16	34	171.5	28	1.2
KLR-707-13	13-10	6.7	19	43	219	38	2.2
KLR-707-16	16-10	10	24.5	50	260	44	3.5
KLR-707-20	20-10	16	27	55	298	52	7.15
KLR-707-22	22-10	19	29	60	330	66	11.5
KLR-707-26	26-10	26.5	35	70	376	73	12.2
KLR-707-32	32-10	39.3	39	81.5	458	87	17.5



G100

产品 编号	规格	工作 负荷T	技术参数 MM					单重 KG
			A	B	C	D	E	
KLR-708-6	6-10	1.4	7.5	32	72	21	18.5	0.33
KLR-708-8	8-10	2.5	9.5	37	87	27.5	25	0.7
KLR-708-10	10-10	4	12	48	104	33.5	28	1.3
KLR-708-13	13-10	6.7	15	59	131	42	38	2.3
KLR-708-16	16-10	10	17.5	70	162	50	44	3.6
KLR-708-20	20-10	16	25	85	197	56	52	7.3
KLR-708-22	22-10	19	27	100	216	62	66	12.1



WARNING 警告

Never exceed Working Load Limit
绝对不能超过工作拉力使用

Never exceed Working Load Limit
绝对不能超过工作拉力使用

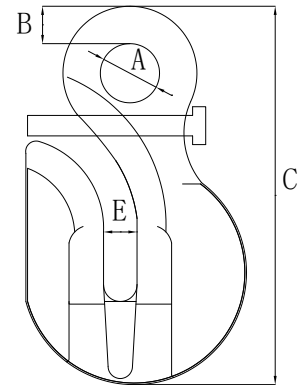
G100 RIGGING



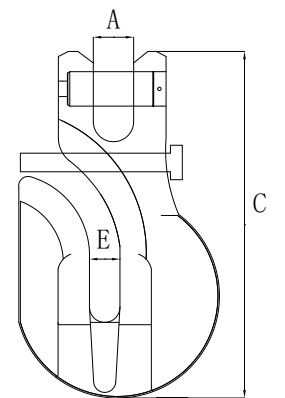
Fatigue tested at 1.5 times Working Load Limit for 20000

G100 EYE SHORTENING GRAB HOOK WITH SAFETY PIN

产品 编号	规格	工作负荷 T	技术参数 MM				单重 KG
			A	B	C	E	
KLR-712-8	8-10	2.5	16.5	12	110	10.5	0.5
KLR-712-10	10-10	4	21	15	136.5	14	1.0
KLR-712-13	13-10	6.7	27.5	20.5	180	15.5	2.2



产品 编号	规格	工作负荷 T	技术参数 MM			单重 KG
			A	C	E	
KLR-713-8	8-10	2.5	10.5	110	10.5	0.5
KLR-713-10	10-10	4	14	136.5	14	1.0
KLR-713-13	13-10	6.7	15.5	180	15.5	2.2



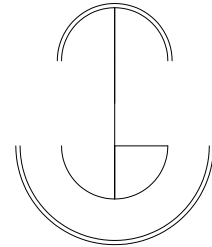
WARNING 警告

Never exceed Working Load Limit
绝对不能超过工作拉力使用

G100 RIGGING



All load pins are 100% individually inspected and



G100 CLEVIS LINK G100

产品 编号	规格	工作 负荷T	技术参数 MM							单重 KG
			A	B	C	D	E	F	G	
KLR-716-13	13-10	6.7	15	90	50	16	174	93	21	1.36



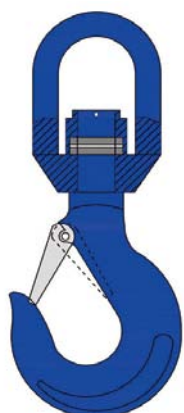
G100 CLAW WITH SHEEP HORN EYE G100

产品 编号	规格	工作 负荷T	技术参数 MM					单重 KG
			A	B	C	D	E	
KLR-714-6	6-10	1.4	8	88	112	18	8	0.3
KLR-714-8	8-10	2.5	10	116	145	24	10	0.69
KLR-714-10	10-10	4	12.5	145	184	30	12.5	1.33
KLR-714-13	13-10	6.7	15.5	178	223	37	15.5	2.36
KLR-714-16	16-10	10	19	216	273	45	19	4.5
KLR-714-20	20-10	16	24.5	278	351	58	24.5	9.0

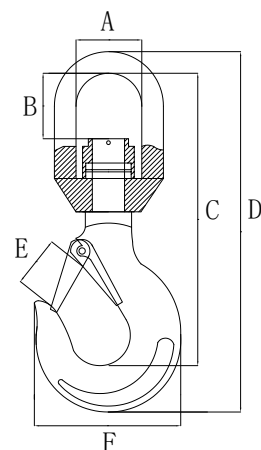
Never exceed Working Load Limit
绝对不能超过工作拉力使用

WARNING 警告

G100 RIGGING

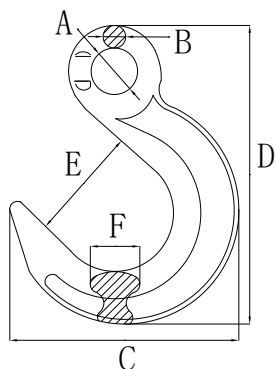


Fatigue tested at 1.5 times Working Load Limit for 20000

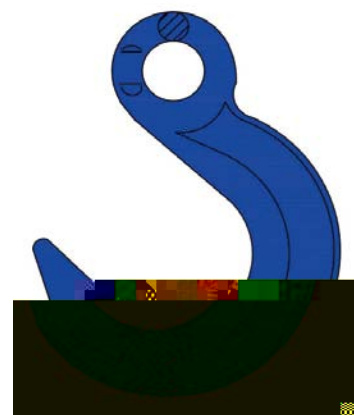


G100 SWVEL HOOK WITH BEARING G100

产品编号	规格	工作负荷 T	技术参数 MM						单重 KG
			A	B	C	D	E	F	
KLR-782-6	6-10	1.4	32.5	37	141	173	24	77	0.65
KLR-782-8	8-10	2.5	41	41.6	171	213	28.5	88	0.95
KLR-782-10	10-10	4	48	51	216	263	34	105	1.71
KLR-782-13	13-10	6.7	55	59	253	310	40	135	3.13
KLR-782-16	16-10	10	61	68	293	364	45	161	5.44



Fatigue tested at 1.5 times Working Load Limit for 20000



G100

产品编号	规格	工作负荷 T	技术参数 MM						单重 KG
			A	B	C	D	E	F	
KLR-786-6	6-10	1.4	20.5	10	100	133	49	17	0.382
KLR-786-8	8-10	2.5	24	12	130	158.5	62	19	0.72
KLR-786-10	10-10	4	31.5	15	152.5	199	73	25	1.25
KLR-786-13	13-10	6.7	44	19	186	241.5	90	33	2.32
KLR-786-16	16-10	10	49	22	218	279	105	37	3.45

WARNING 警告

Never exceed Working Load Limit
绝对不能超过工作拉力使用

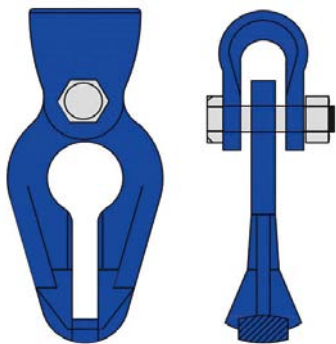
G100 RIGGING

Fatigue tested at 1.5 times Working Load Limit for 20000

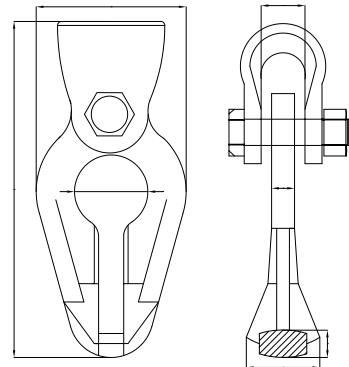
Never exceed Working Load Limit
绝对不能超过工作拉力使用

WARNING 警告

G100 RIGGING

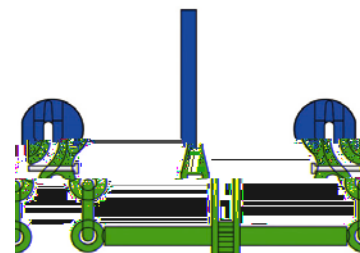
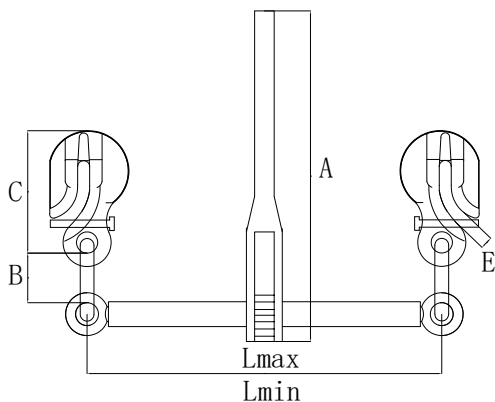


Individually proof test at 2.5 times Working Load
Fatigue tested at 1.5 times Working Load Limit



G100 CHAIN-ROPE CONNECTOR G100

产品编号	规格	工作负荷 T	技术参数 MM							单重 KG
			A	B	C	D	E	F	G	
KLR-717-8	8-10	2.5	58	33.5	142	10	12	20	32	0.63



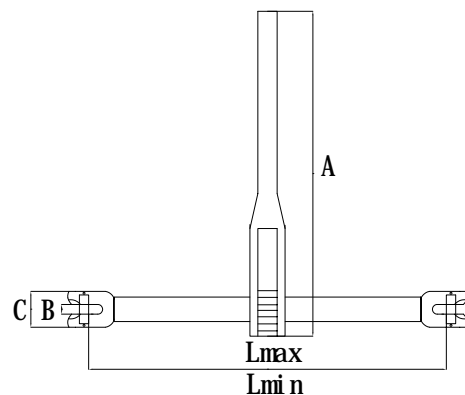
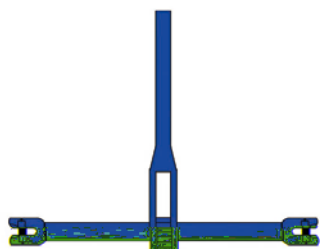
G100

产品编号	规格	工作负荷 KN	破断负荷 KN	技术参数 MM						单重 KG
				A	B	C	E	Lmin	Lmax	
KLR-750-8	8-10	50	100	383	50	98	10.5	340	500	3.71
KLR-750-10	10-10	80	160	390	50	121.5	13	365	525	5.85
KLR-750-13	13-10	134	268	392	72	159.5	15.5	365	525	9.34

WARNING 警告

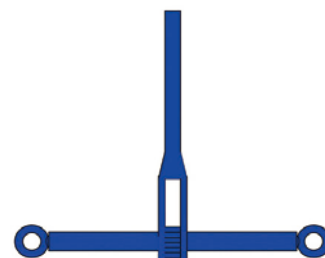
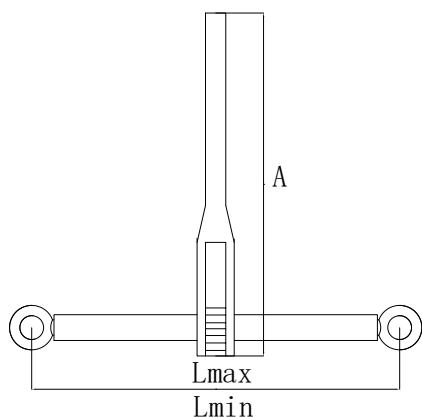
Never exceed Working Load Limit
绝对不能超过工作拉力使用

G100 RIGGING



G100

产品编号	规格	工作负荷 KN	破断负荷 KN	技术参数 MM					单重 KG
				A	B	C	Lmin	Lmax	
KLR-751-8	8-10	50	100	383	10	40	340	500	3.5
KLR-751-10	10-10	80	160	390	13	49	365	525	5.5
KLR-751-13	13-10	134	268	392	16	64	365	525	7.1



G100

产品编号	规格	工作负荷 KN	破断负荷 KN	技术参数 MM			单重 KG
				A	Lmin	Lmax	
KLR-752-8	8-10	50	100	383	340	500	2.6
KLR-752-10	10-10	80	160	390	365	525	4.3
KLR-752-13	13-10	134	268	392	365	525	5.0

Never exceed Working Load Limit
绝对不能超过工作拉力使用

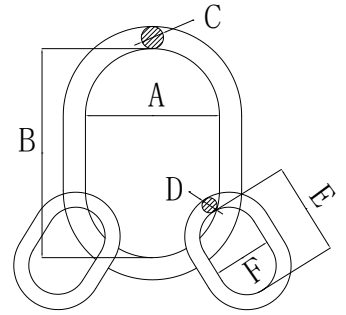
WARNING 警告

G100 RIGGING



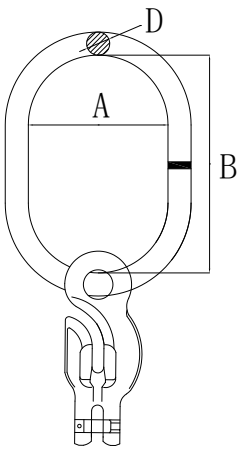
Individually proof test at 2.5 times Working Load

Fatigue tested at 1.5 times Working Load Limit

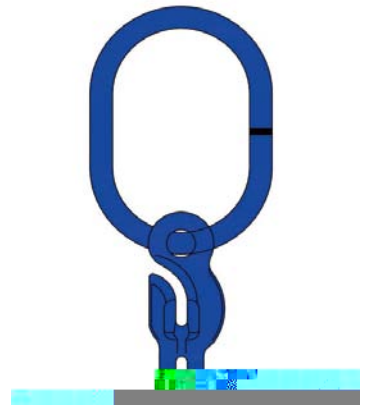


G100

产品 编号	规格	工作负荷 T	技术参数 MM						单重 KG
			A	B	C	D	E	F	
KLR-722-6	6-10	3	75	135	19	13	54	25	1.3
KLR-722-8	8-10	5.3	90	160	23	16.5	70	35	2.33
KLR-722-10	10-10	8	100	180	27	19	85	40	3.7
KLR-722-13	13-10	14	110	200	33	23	115	50	6.5
KLR-722-16	16-10	21.2	140	260	36	27	140	65	10.1
KLR-722-20	20-10	33.6	190	350	50	33	150	70	22.8
KLR-722-22	22-10	39.9	190	350	50	36	180	100	26



G100



WARNING 警告

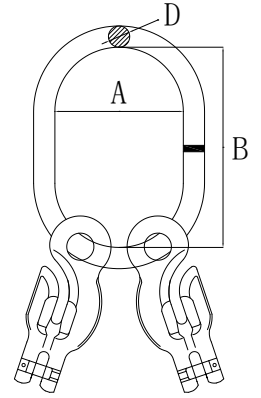
Never exceed Working Load Limit
绝对不能超过工作拉力使用

G100 RIGGING

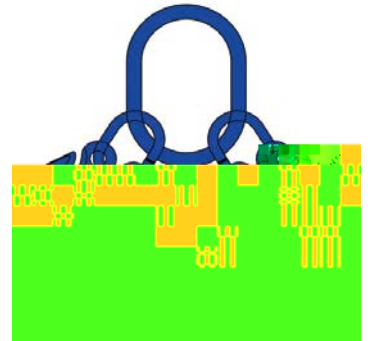
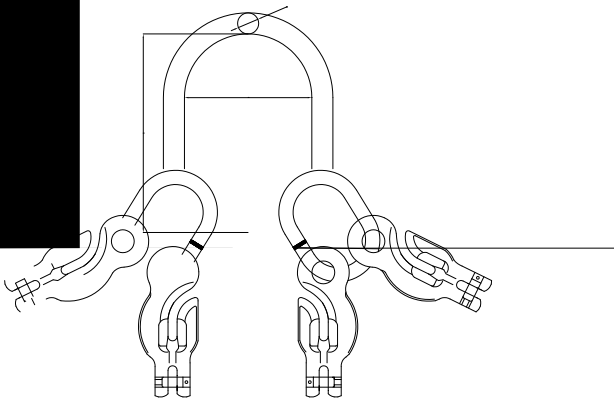


G100

Individually proof test at 2.5 times Working Load Limit.
 Fatigue tested at 1.5 times Working Load Limit for 20000



产品 编号	规格	工作负荷 T	技术参数 MM			配件1	配件2 KLR-714	单重 KG
			A	B	D			
KLR-736-6	6-10	2	70	120	14	强力环	6-10全套*2	1.04
KLR-736-8	8-10	3.55	80	140	17	强力环	8-10全套*2	2.12
KLR-736-10	10-10	5.6	95	160	22	强力环	10-10全套*2	4.15
KLR-736-13	13-10	9.5	110	190	25	强力环	13-10全套*2	7.0
KLR-736-16	16-10	14	130	230	32	强力环	16-10全套*2	13.4



Never exceed Working Load Limit
 绝对不能超过工作拉力使用

WARNING 警告